



ADVENT CHRISTIAN VILLAGE
AT DOWLING PARK

2019-20 RATE SHEET

Advent Christian Village does not charge an entrance fee.

Updated July 2019. Rates are subject to change.

Initial Fees

- ★ \$75 application fee (per person)
- ★ Security deposit equal to one month's rent
- ★ \$300 non-refundable pet fee (if applicable)
- ★ \$45 video entertainment system connection fee

Monthly ACV Charges

- ★ Rent
- ★ \$140 ACV membership fee (per person)
- ★ \$67 HOA (River Woods Homeowners Assoc.)
- ★ Video entertainment system:
 - ★ Analog: \$45
 - ★ Basic: \$51
 - ★ Enhanced: \$67.50
- ★ \$16 Suwannee County assessment tax
- ★ Suwannee County Ad Valorem tax (property tax based on unit) (Does not pertain to Carter House nor Dowling House.)
- ★ Water and waste water:
 - ★ Domestic monthly base rate up to 2,000 gallons: \$40.25
 - ★ Per thousand gallons over base: \$4.35
 - ★ Irrigation per thousand gallons: \$1.50

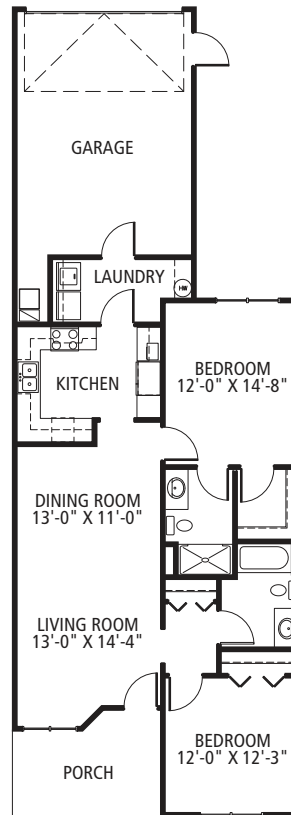
Other Monthly Charges

- ★ Electricity (Suwannee Valley Electric Coop)
- ★ Telephone (Windstream)

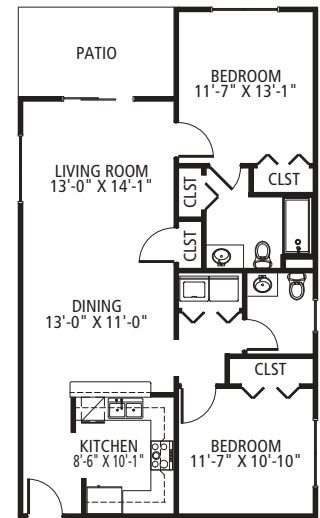
Annual Expense

- ★ Post office box rental:
 - ★ Small: \$32
 - ★ Medium: \$37.50
 - ★ Large: \$60
 - ★ Extra large: \$78

Taylor Commons: Our Newest Rentals



Townhomes



Lawrence House

🏠 Townhomes: \$1,450

🏠 Lawrence House: \$1,450 (Rent includes water, one hour of weekly housekeeping, and detached covered parking.)

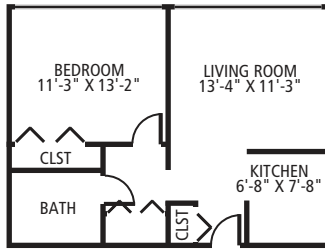
Dacier Manor Assisted Living

- 🏠 Semi-private room (single): \$2,900
- 🏠 Private room (married couple): \$2,675 per person
- 🏠 Private room (single): \$4,250

Good Samaritan Center

- 🏠 Semi-private room: \$305 per day
- 🏠 Private room: \$335 per day

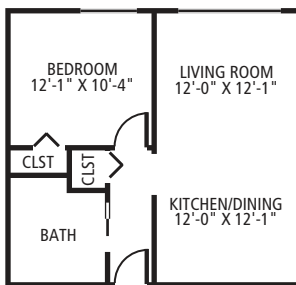
Dowling House



One-bedroom

- 🏠 Efficiency: \$701
- 🏠 One-bedroom: \$809
- ★ If gross annual income is under \$28,950 for a single or \$33,100 for a couple, you may qualify for Section 8 HUD subsidy.*
- ★ Rent includes water, electricity and taxes.

Carter House



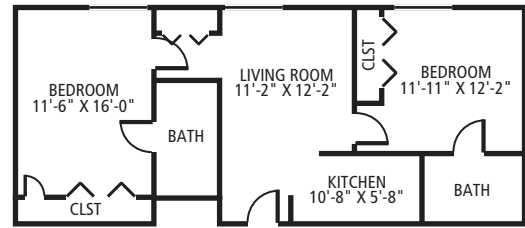
One-bedroom

- 🏠 One-bedroom: Rent based on gross annual income and will not be more than 30% for a single person claiming less than \$28,950 or a couple claiming less than \$33,100.*
- 🏠 Two-bedroom: Apartments are designated for two persons and written verification of need for two bedrooms must be supplied. Rent based on gross annual income and will not be more than 30% for the couple claiming less than \$33,100.*

Manufactured Home Lot

- 🏠 Park of the Pines single-wide: \$305
- 🏠 Park of the Pines double-wide: \$333

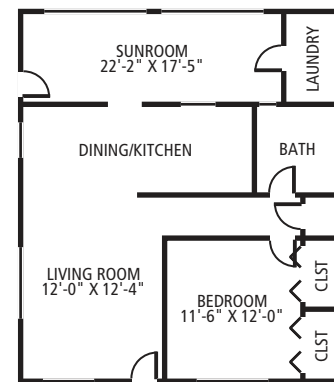
Smith Riverview



Two-bedroom

- 🏠 One-bedroom: \$1,400–\$1,450
- 🏠 Two-bedroom: \$1,550–\$1,650
- ★ Rent includes water, \$50 toward meals, and one hour of weekly housekeeping.

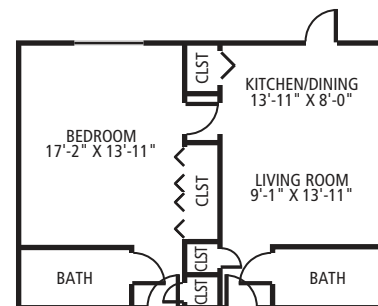
Terrace Apartments, Clusters & Homes



One-bedroom

- 🏠 One-bedroom: \$1,000–\$1,100
- 🏠 Two-bedroom: \$1,170–\$1,250

Wilson Gardens



One-bedroom

- 🏠 Studio: \$1,160
- 🏠 One-bedroom: \$1,375
- ★ Rent includes water, \$50 toward meals, and one hour of weekly housekeeping.

*Income limits effective March 2018. **Floor plans are representative and not necessarily available.
 PO Box 4345 • Dowling Park, FL 32064 • (386) 658-5291 • 1-800-647-3353 • Fax: (386) 658-5332
 ACV@ACVillage.net • www.ACVillage.net • facebook.com/ACVillage • TDD 1-800-955-8771