



ADVENT CHRISTIAN VILLAGE
AT DOWLING PARK

2020-21 RATE SHEET

Advent Christian Village does not charge an entrance fee.

Updated July 2020. Rates are subject to change.

Initial Fees

- ★ \$75 application fee (per person)
- ★ Security deposit equal to one month's rent
- ★ \$300 non-refundable pet fee (if applicable)
- ★ \$45 video entertainment system connection fee

Monthly ACV Charges

- ★ Rent
- ★ \$143 ACV membership fee (per person)
- ★ \$70 HOA (River Woods Homeowners Assoc.)
- ★ Video entertainment system:
 - ★ Analog: \$46
 - ★ Basic: \$52
 - ★ Enhanced: \$68.50
- ★ \$16 Suwannee County assessment tax
- ★ Suwannee County Ad Valorem tax (property tax based on unit) (Does not pertain to Carter House nor Dowling House.)
- ★ Water and waste water:
 - ★ Domestic monthly base rate up to 2,000 gallons: \$41
 - ★ Per thousand gallons over base: \$4.35
 - ★ Irrigation per thousand gallons: \$1.70

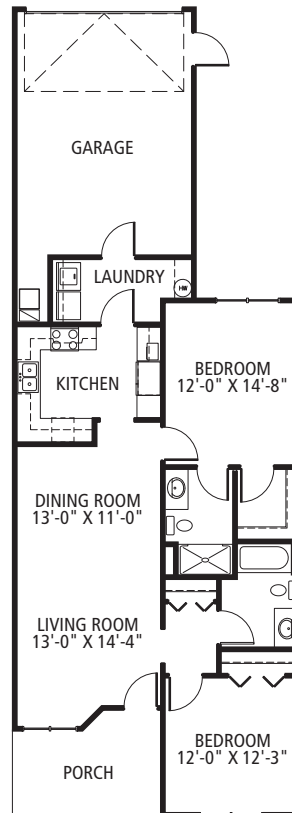
Other Monthly Charges

- ★ Electricity (Suwannee Valley Electric Coop)
- ★ Telephone (Windstream)

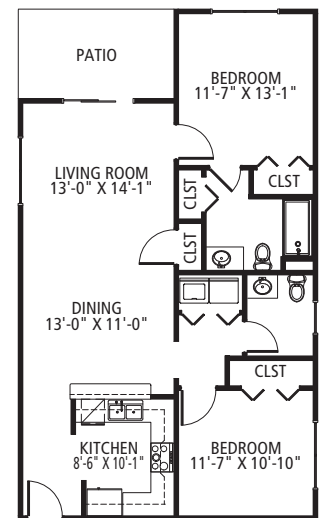
Annual Expense

- ★ Post office box rental:
 - ★ Small: \$32.50
 - ★ Medium: \$38
 - ★ Large: \$61
 - ★ Extra large: \$80

Taylor Commons: Our Newest Rentals



Townhomes



Lawrence House

- 🏠 Townhomes: \$1,530
- 🏠 Lawrence House: \$1,500 (Rent includes water, one hour of weekly housekeeping, and detached covered parking.)

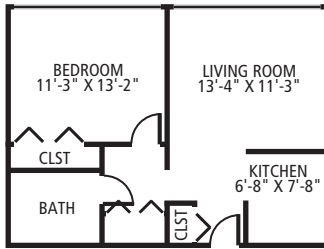
Dacier Manor Assisted Living

- 🏠 Semi-private room (single): \$3,000
- 🏠 Private room (married couple): \$2,775 per person
- 🏠 Private room (single): \$4,400

Good Samaritan Center

- 🏠 Semi-private room: \$320 per day
- 🏠 Private room: \$350 per day

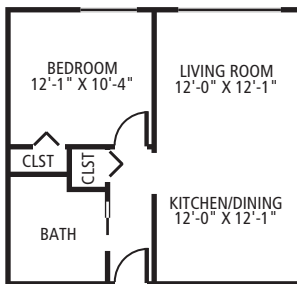
Dowling House



One-bedroom

- 🏠 Efficiency: \$701
- 🏠 One-bedroom: \$809
- ★ If gross annual income is under \$28,950 for a single or \$33,100 for a couple, you may qualify for Section 8 HUD subsidy.*
- ★ Rent includes water, electricity and taxes.

Carter House



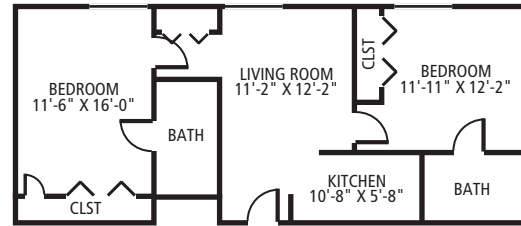
One-bedroom

- 🏠 One-bedroom: Rent based on gross annual income and will not be more than 30% for a single person claiming less than \$28,950 or a couple claiming less than \$33,100.*
- 🏠 Two-bedroom: Apartments are designated for two persons and written verification of need for two bedrooms must be supplied. Rent based on gross annual income and will not be more than 30% for the couple claiming less than \$33,100.*

Manufactured Home Lot

- 🏠 Park of the Pines single-wide: \$315
- 🏠 Park of the Pines double-wide: \$342

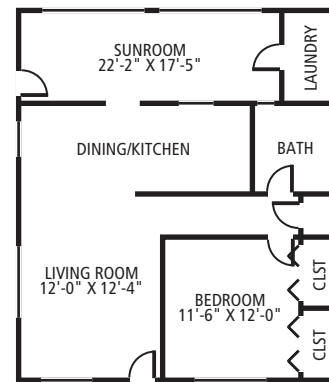
Smith Riverview



Two-bedroom

- 🏠 One-bedroom: \$1,400-\$1,450
- 🏠 Two-bedroom: \$1,570-\$1,650
- ★ Rent includes water, \$100 toward meals, and one hour of weekly housekeeping.

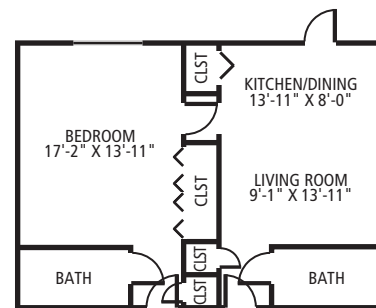
Terrace Apartments, Clusters & Homes



One-bedroom

- 🏠 One-bedroom: \$1,120-\$1,230
- 🏠 Two-bedroom: \$1,230-\$1,260

Wilson Gardens



One-bedroom

- 🏠 Studio: \$1,180
- 🏠 One-bedroom: \$1,375
- ★ Rent includes water, \$100 toward meals, and one hour of weekly housekeeping.

*Income limits effective March 2019. **Floor plans are representative and not necessarily available.
 PO Box 4345 • Dowling Park, FL 32064 • (386) 658-5291 • 1-800-647-3353 • Fax: (386) 658-5332
 ACV@ACVillage.net • www.ACVillage.net • facebook.com/ACVillage • TDD 1-800-955-8771