



ADVENT CHRISTIAN VILLAGE
AT DOWLING PARK

2022-23 RATE SHEET

Advent Christian Village does not charge an entrance fee.
Updated July 2022. Rates are subject to change.

Initial Fees

- ★ \$75 application fee (per person)
- ★ Security deposit equal to one month's rent
- ★ \$300 non-refundable pet fee (if applicable)
- ★ \$45 video entertainment system connection fee

Monthly ACV Charges

- ★ Rent
- ★ \$160 ACV membership fee (per person)
- ★ \$80 HOA (River Woods Homeowners Assoc.)
- ★ \$320 HOA (Cottages Homeowners Assoc.)
- ★ Video TV System Service Options:
 - ★ Basic: \$30
 - ★ Standard: \$59.50
 - ★ Enhanced: \$87.50 plus equipment
- ★ \$18 Suwannee County assessment tax
- ★ Suwannee County Ad Valorem tax (property tax based on unit) (Does not pertain to Carter House nor Dowling House.)
- ★ Water and waste water:
 - ★ Domestic monthly base rate up to 2,000 gallons: \$44.50
 - ★ Per thousand gallons over base: \$4.35
 - ★ Irrigation per thousand gallons: \$1.70

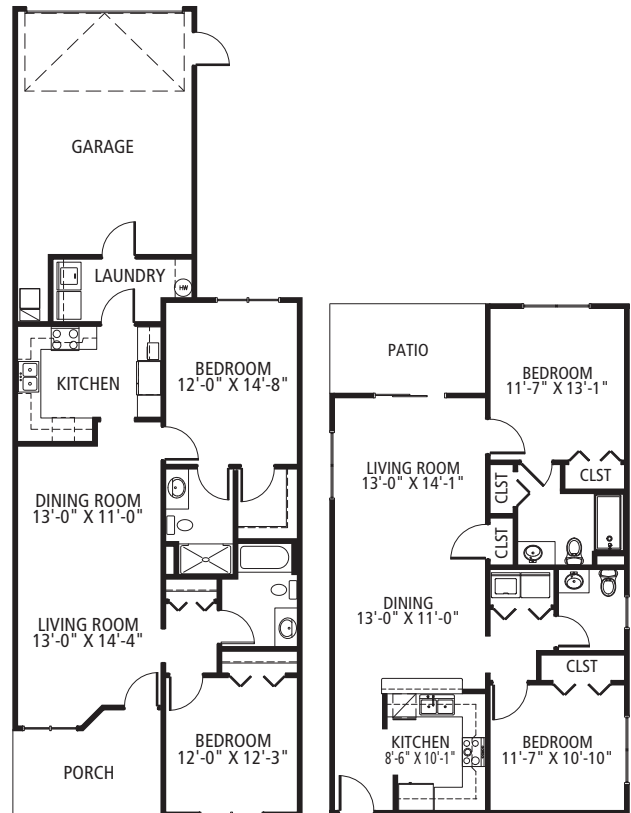
Other Monthly Charges

- ★ Electricity (Suwannee Valley Electric Coop)
- ★ Telephone (Windstream)

Annual Expense

- ★ Post office box rental:
 - ★ Small: \$35
 - ★ Medium: \$41.50
 - ★ Large: \$66
 - ★ Extra large: \$87.50

Taylor Commons: Our Newest Rentals



Townhomes

Lawrence House

- ★ Townhomes: \$1,780
- ★ Lawrence House: \$1,730 (Rent includes water, one hour of weekly housekeeping, and detached covered parking.)

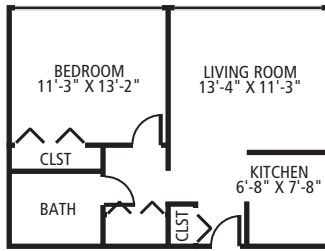
Dacier Manor Assisted Living

- ★ Semi-private room (single): \$3,450
- ★ Private room (married couple): \$3,200 per person
- ★ Private room (single): \$5,000

Good Samaritan Center

- ★ Semi-private room: \$365 per day
- ★ Private room: \$400 per day

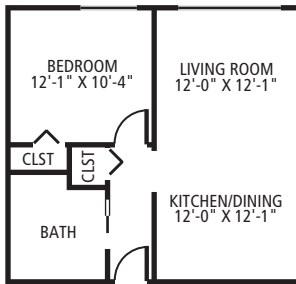
Dowling House



One-bedroom

- ★ Efficiency: \$757
- ★ One-bedroom: \$875
- ★ If gross annual income is under \$34,000 for a single or \$38,850 for a couple, you may qualify for Section 8 HUD subsidy.*
- ★ Rent includes water, electricity and taxes.

Carter House



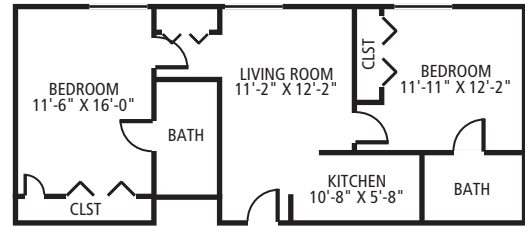
One-bedroom

- ★ One-bedroom: Rent based on gross annual income and will not be more than 30% for a single person claiming less than \$34,000 or a couple claiming less than \$38,850.*
- ★ Two-bedroom: Apartments are designated for two persons and written verification of need for two bedrooms must be supplied. Rent based on gross annual income and will not be more than 30% for the couple claiming less than \$38,850.*

Manufactured Home Lot

- ★ Park of the Pines single-wide: \$357.50
- ★ Park of the Pines double-wide: \$387.50

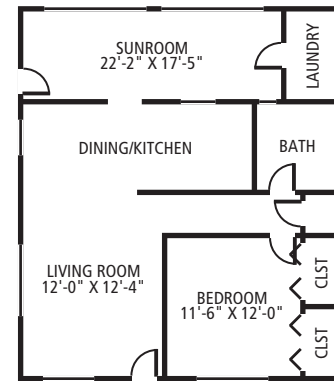
Smith Riverview



Two-bedroom

- ★ One-bedroom: \$1,430–\$1,480
- ★ Two-bedroom: \$1,600–\$1,690
- ★ Rent includes water, \$100 toward meals, and one hour of weekly housekeeping.

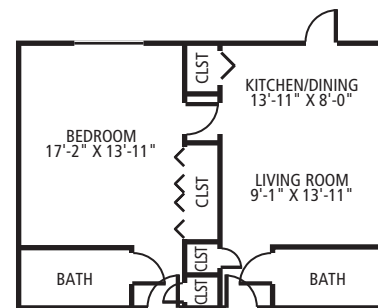
Terrace Apartments, Clusters & Homes



One-bedroom

- ★ One-bedroom: \$1,190-\$1,290
- ★ Two-bedroom: \$1,290-\$1,400

Wilson Gardens



One-bedroom

- ★ Studio: \$1,210
- ★ One-bedroom: \$1,400
- ★ Rent includes water, \$100 toward meals, and one hour of weekly housekeeping.

**Floor plans are representative and not necessarily available.