



ADVENT CHRISTIAN VILLAGE  
AT DOWLING PARK

**2024-25 RATE SHEET**

Advent Christian Village does not charge an entrance fee.  
Updated July 2024. Rates are subject to change.

**Initial Fees**

- ★ \$75 application fee (per person)
- ★ Security deposit equal to one month's rent
- ★ \$300 non-refundable pet fee (if applicable)
- ★ \$45 video entertainment system connection fee

**Monthly ACV Charges**

- ★ Rent
- ★ \$190 ACV membership fee (per person)
- ★ \$76 Lifestyle Club (per person)
- ★ \$127 HOA (Riverwoods only)
- ★ \$320 HOA (Cottages at River Hammock only)
- ★ Video TV System Service Options:
  - ★ Basic: \$32
  - ★ Standard: \$62
  - ★ Enhanced: \$90 plus equipment
- ★ \$19 Suwannee County assessment tax
- ★ Suwannee County Ad Valorem tax (property tax based on unit) (Does not pertain to Carter House nor Dowling House.)
- ★ Water and waste water:
  - ★ Monthly base rate <2,000 gallons: \$47
  - ★ Per thousand gallons over base: \$4.65
  - ★ Irrigation per thousand gallons: \$1.85

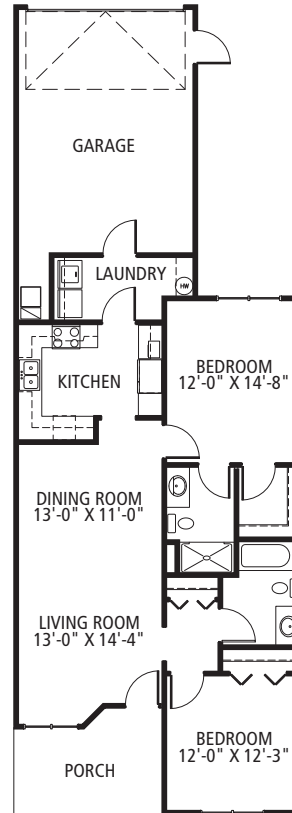
**Other Monthly Charges**

- ★ Electricity (Suwannee Valley Electric Coop)
- ★ Telephone (Windstream)

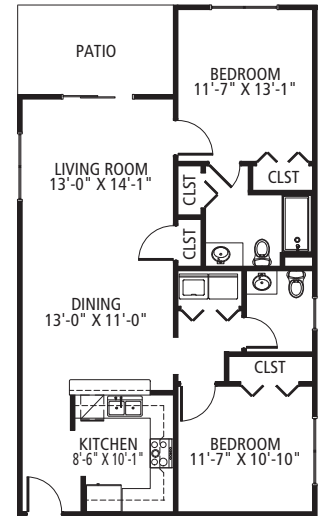
**Annual Expense**

- ★ Post office box rental:
  - ★ Small: \$37
  - ★ Medium: \$44
  - ★ Large: \$95
  - ★ Extra large: \$192

**Taylor Commons: Our Newest Rentals**



*Townhome*



*Lawrence House*

- ★ Townhome: \$2,021
- ★ Lawrence House: \$1,965 (Rent includes water, one hour of weekly housekeeping, and detached covered parking.)

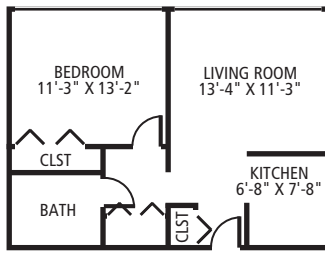
**Dacier Manor Assisted Living**

- ★ Semi-private room (single): \$3,825
- ★ Private room (married couple): \$3,575 per person
- ★ Private room (single): \$5,500

**Good Samaritan Center**

- ★ Semi-private room: \$385 per day
- ★ Private room: \$420 per day

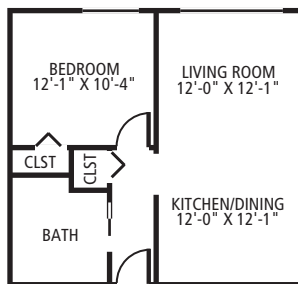
## Dowling House



*One-bedroom\**

- ★ Efficiency: \$835
- ★ One-bedroom: \$965
- ★ If gross annual income is under \$39,900 for a single or \$45,600 for a couple, you may qualify for Section 8 HUD subsidy.
- ★ Rent includes water, electricity and taxes.

## Carter House



*One-bedroom\**

- ★ One-bedroom: Rent based on gross annual income and will not be more than 30% for a single person claiming less than \$39,900 or a couple claiming less than \$45,600.
- ★ Two-bedroom: Apartments are designated for two persons and written verification of need for two bedrooms must be supplied. Rent based on gross annual income and will not be more than 30% for the couple claiming less than \$45,600.

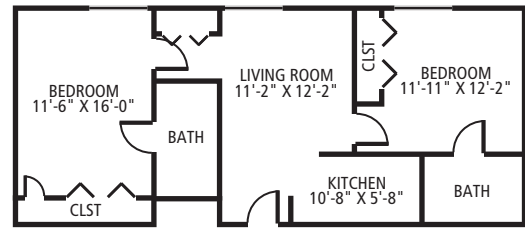
## Manufactured Home Lot

- ★ Park of the Pines single-wide: \$407.50
- ★ Park of the Pines double-wide: \$442.50

\*Floor plans are representative and not necessarily available.

PO Box 4345 • Dowling Park, FL 32064 • (386) 658-5291 • 1-800-647-3353 • Fax: (386) 658-5332  
 ACV@ACVillage.net • www.ACVillage.net • facebook.com/ACVillage • TDD 1-800-955-8771

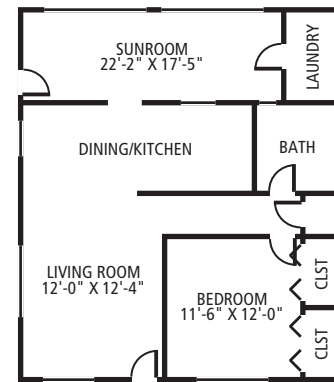
## Smith Riverview



*Two-bedroom\**

- ★ One-bedroom: \$1,580–\$1,680
- ★ Two-bedroom: \$1,816–\$1,916
- ★ Rent includes water, \$100 toward meals, and one hour of weekly housekeeping.

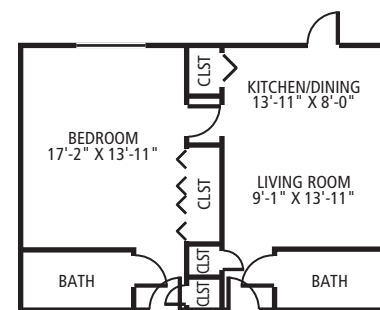
## Terrace Apartments, Clusters & Homes



*One-bedroom\**

- ★ One-bedroom: \$1,385-\$1,485
- ★ Two-bedroom: \$1,550-\$1,650
- ★ Three-bedroom: \$1,750-\$1,840

## Wilson Gardens



*One-bedroom\**

- ★ Studio: \$1,365
- ★ One-bedroom: \$1,575
- ★ Rent includes water, \$100 toward meals, and one hour of weekly housekeeping.