



ADVENT CHRISTIAN VILLAGE
AT DOWLING PARK

2026-2027 RATE SHEET

Advent Christian Village does not charge an entrance fee.
Updated July 2026. Rates are subject to change.

Initial Fees

- ★ \$75 application fee (per person)
- ★ Security deposit equal to one month's rent
- ★ \$300 non-refundable pet fee (if applicable)
- ★ \$45 video entertainment system connection fee

Monthly ACV Charges

- ★ Rent
- ★ \$205 ACV membership fee (per person)
- ★ \$80 Lifestyle Club (per person)
- ★ \$127 HOA (Riverwoods only)
- ★ \$320 HOA (Cottages at River Hammock only)
- ★ Video TV System Service Options:
 - ★ Basic: \$34
 - ★ Standard: \$67
 - ★ Enhanced: \$97 plus equipment
- ★ \$20 Suwannee County assessment tax
- ★ Suwannee County Ad Valorem tax (property tax based on unit) (Does not pertain to Carter House nor Dowling House.)
- ★ Water and wastewater:
 - ★ Monthly base rate <2,000 gallons: \$50
 - ★ Per thousand gallons over base: \$5.20
 - ★ Irrigation per thousand gallons: \$2.10

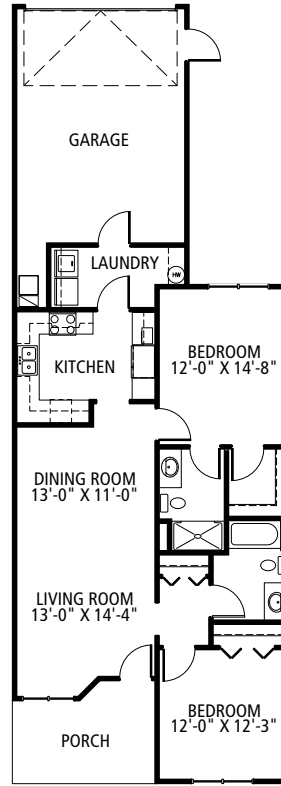
Other Monthly Charges

- ★ Electricity (Suwannee Valley Electric Coop)
- ★ Telephone (Windstream)

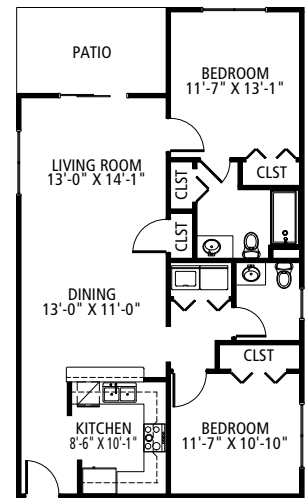
Annual Expense

- ★ Post office box rental:
 - ★ Small: \$40
 - ★ Medium: \$47
 - ★ Large: \$76
 - ★ Extra large: \$102

Taylor Commons: 2 BR, 2 BA



Townhome



Lawrence House

- ★ Townhome: \$2,142
- ★ Lawrence House: \$2,090 (Rent includes water, one hour of weekly housekeeping, and detached covered parking.)

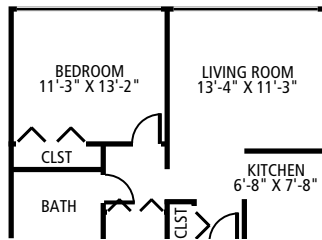
Dacier Manor Assisted Living

- ★ Semi-private room (single): \$3,825
- ★ Private room (married couple): \$3,575 per person
- ★ Private room (single): \$5,500

Good Samaritan Center

- ★ Semi-private room: \$389 per day
- ★ Private room: \$424 per day

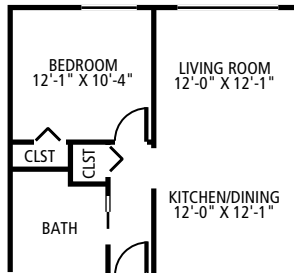
Dowling House



*One-bedroom**

- ★ Efficiency: \$894
- ★ One-bedroom: \$1,034
- ★ If gross annual income is under \$43,850 for a single or \$50,100 for a couple, you may qualify for Section 8 HUD subsidy.
- ★ Rent includes water, electricity and taxes.

Carter House



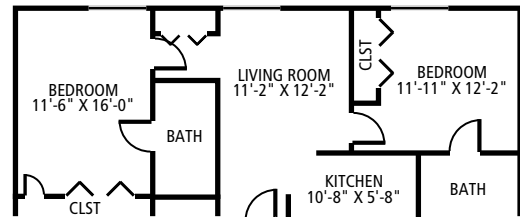
*One-bedroom**

- ★ One-bedroom: Rent based on gross annual income and will not be more than 30% for a single person claiming less than \$43,850 or a couple claiming less than \$50,100.
- ★ Two-bedroom: Apartments are designated for two persons and written verification of need for two bedrooms must be supplied. Rent based on gross annual income and will not be more than 30% for the couple claiming less than \$50,100.

Manufactured Home Lot

- ★ Park of the Pines single-wide: \$439
- ★ Park of the Pines double-wide: \$476

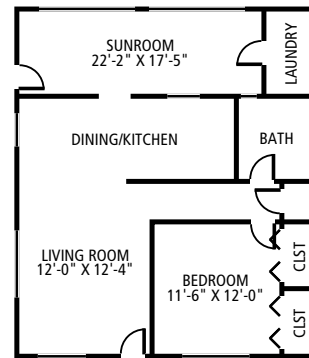
Smith Riverview



*Two-bedroom**

- ★ One-bedroom: \$1,698-\$1,803
- ★ Two-bedroom: \$1,954-\$2,090
- ★ Rent includes water, \$100 toward meals, and one hour of weekly housekeeping.

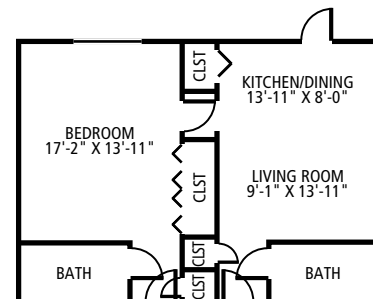
Terrace Apartments, Clusters & Homes



*One-bedroom**

- ★ One-bedroom: \$1,489-\$1,615
- ★ Two-bedroom: \$1,620-\$1,855
- ★ Three-bedroom: \$1,881-\$1,986

Wilson Gardens



*One-bedroom**

- ★ Studio: \$1,463-\$1,568
- ★ One-bedroom: \$1,594-\$1,698
- ★ Rent includes water, \$100 toward meals, and one hour of weekly housekeeping.

*Floor plans are representative and not necessarily available.

PO Box 4345 • Dowling Park, FL 32064 • (386) 658-5291 • Fax: (386) 658-5332
 ACV@ACVillage.net • www.ACVillage.net • facebook.com/ACVillage • TDD 1-800-955-8771